



WHITMAN'S FESTIVAL OF THE ARTS, MAY 14-15



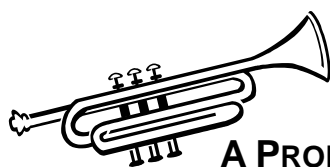
Enjoy hearing Whitman's musical ensembles during our annual schoolwide festival, also featuring visual arts and choral performances. Instrumental concerts will take place in the cafeteria per the schedule below. **Volunteer docents are needed** to guide visitors and maintain quiet in the hallways during performances; to help out, contact Anne Hollander (anne@mccreery.org).

Wednesday, May14

6:00 - Jazz Ensemble
6:30 - Men's Chorus
7:00 - Concert Orchestra
7:30 - Women's Chorus
8:00 - Advanced Band
8:30 - Chamber Choir

Thursday, May15

6:00 - Concert Band
6:30 - General Chorus
7:00 - Symphonic Band
7:30 - Treble Chorale
8:00 - Symphonic Orchestra
8:30 - Barber Shop & Beauty Shop quartets



A PROFESSIONAL TOUCH Lab Fees Enable Guest Artists' Visits

Once again, Instrumental Music Director Chris Allen has brought in professional musicians for workshops and master classes that improve students' technique and musicality while exposing them to role models in the music professions. The annual lab fees paid by instrumental music families help support these and other enrichment activities through the year.

This year's guests were: tenor saxophonist Paul Carr; composer/arranger Alan Baylock; U.S. Air Force jazz band Airmen of Note; composer/arranger Mike Kamuf; and John Cradler, principal tuba for the U.S. Marine Corps Band.

SIGN UP FOR THE LIST-SERVE

Incoming families should sign up now for the Whitman Instrumental Music list-serve, an email list providing instrumental performance information, schedules, photos and key news and updates. Instrumental families are strongly encouraged to join, as this is the department's main outlet for information. (Your contact information will be used for music-related purposes only.)

To enroll, send *your name, the name of your student, his/her fall 2008 grade level, and your email address/es* to Carol Freedman at cfd2@verizon.net.

SPRING HONORS AND AWARDS

Congratulations to Whitman performers for recent honors and awards. Your achievements throughout the year reflect a level of hard work and dedication that does us all proud.

During the music department's March trip to Orlando, Florida's Heritage Music Competition, besides having fun in the sun, the Jazz Ensemble, Symphonic Orchestra, and Symphonic and Concert Bands all earned Gold awards; Jazz Ensemble and Concert Band took first place in their categories; and Symphonic Orchestra was deemed Outstanding Orchestra. Damjan Korac and Gavin Palmer were named Outstanding Soloists and the music department overall (choral and instrumental) received the Sweepstakes prize for highest-scoring ensembles.

More recently, Symphonic Orchestra and Symphonic Band scored across-the-board Superior ratings (the highest possible score) at state festival. The Concert Band also received Superior marks at county festival. Earlier county results included Superior ratings for Symphonic Orchestra and Symphonic Band. The Concert Orchestra, which played "for comments only," also received strongly favorable responses.

In a first for Whitman, the Jazz Ensemble this year played the "Essentially Ellington" festival at Temple University in March, where tenor saxophonist Gavin Palmer was singled out for an Honorable Mention.

Know the Score

Newsletter for the Walt Whitman Instrumental Music Program

Spring 2008

Double the Music, Double the Motivation (But a Single Credit Requirement): New Instrumental Music Line-Up Announced

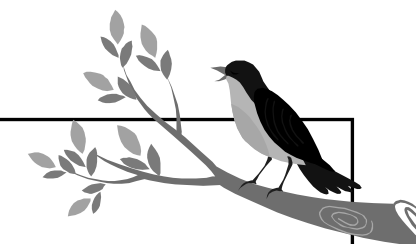
Instrumental Music Directors Chris Allen and Terry Alvey have announced an exciting restructuring of student ensembles that they believe will help all instrumental students at Whitman to grow and thrive as musicians. The new line-up offers a wider range of musical levels and ensemble sizes, so every student can find a perfect musical fit. Overall, the program will offer more new music at a mix of challenge levels, rather than focusing on festival-type music throughout the school year. Expect to see a greater variety of musical selections for football, seasonal concerts, festivals and the Festival of the Arts. Highly motivated students will be playing more complex and higher-graded pieces than previously and some will have the chance to work in chamber groups as well as large ensembles.

For students at the Symphonic Orchestra level, a major boon is that all this new music and participation in multiple ensembles will demand a commitment of just one class period.

In other words, *wind and percussion students will no longer be required to participate in two class periods of music per day* if selected for Symphonic Orchestra or Jazz Ensemble.

Instead, all Symphonic Orchestra-level players (strings included) will play in two ensembles for which rehearsals will alternate during the *single* Symphonic Orchestra class period. Similarly, Jazz Ensemble members can join a second group or not, according to desire and scheduling needs. While offering more latitude in general academic choices, the reduced credit requirements should enable more instrumentalists to take advantage of Whitman's wide range of music courses, including choruses, Theory and Composition, Electronic Music, piano and guitar. Mr. Allen also foresees that more students may participate in county honors and all-state ensembles, solo and ensemble festivals and community-based groups.

For FAQs and an informational chart, see page 3.



SPRING/SUMMER CALENDAR

MAY	
10	State Solo and Ensemble Orchestra Festival
17	State Solo & Ensemble Band Festival
14	Festival of the Arts, 6-10 pm—Jazz Ensemble, Concert Orchestra, Advanced Band
15	Festival of the Arts, 6-10 pm—Concert Band, Symphonic Band, Symphonic Orchestra
19	Awards Night/Dinner, 6:30 pm, students; 7:30 pm, parents
22	Chamber Music Concert, Choral Room, 7:00 pm
29	Jazz Ensemble concert, Brookmont Church, 7:00 pm
JUNE	
5	Graduation, DAR Constitution Hall, 2:30 pm
AUGUST	
20+22	Band Camp for rising freshman winds/percussion. (See page 2 for info.)

AWARDS NIGHT

To celebrate graduating seniors and acknowledge outstanding musicians in all grades, the Instrumental Music Awards night will take place on Monday, **May 19**. Students are invited at 6:30 p.m. for a Boosters-hosted dinner in the cafeteria. Parents may attend the presentations at 7:30. **Parent volunteers are needed** to serve the dinner; contact Francesca Slesinger at Francesca@slesingermanagement.com.

COMMENCEMENT PERFORMANCE



Underclassmen in Symphonic Band and Symphonic Orchestra are scheduled to perform at commencement at June 5 at 2:30 pm at DAR Constitution Hall. Performers will be bused to and from the site; watch for details. **Two parent volunteers are needed afterward to help collect performers' school-owned tuxedos.**

CONGRATS, SENIORS (TURN IN THOSE TUXES!)

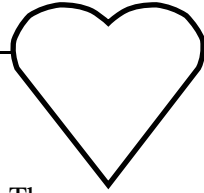
Congratulations, graduating seniors—we'll miss you. Come back in the fall to visit, hear concerts and pick up a free CD of this year's performances (also available to all underclassmen).

Men, remember to **turn in your tuxedos** after Festival of the Arts! Your diplomas can't be handed out until you do.

We also make special note of the following soon-to-be-alumni planning to pursue music as a major or minor in college (schools listed where known):

Daryl Baldwin, Lawrence U.; Catie Bartlett, Princeton U.; Tom Boyer, Lawrence U.; Chikara Dean, U of St. Andrews, Scotland; Maggie Guzikowski; Chris Hoelzel, American University; Mandy Mamlet, U. of Southern California; Polly Membrino, U. of Puget Sound; Sam Raim, Northwestern U.; Pam Schrenk.

WHO ARE THE BOOSTERS?



Welcome incoming instrumental families! The Whitman Instrumental Music Boosters are parents like you, volunteering as a way to connect to the school community and support our kids' musical endeavors.

In addition to the openings below, there are many ways to serve during the year, such as the fall garden party fundraiser and spring awards banquet. To help, contact Co-Chairs Diana Deem, dianadeem@gmail.com, or Jay Kaufman, jfk@kaufmanhome.net.

2008-2009 Committee Chairs

Co-Chairs	Diana Deem Jay Kaufman
Treasurer	Debra Jacobson
Secretary	Wendy Weinberg
Newsletter Editor	Mandy Katz
Mailing	Francesca Slesinger
Tuxedos lead position helpers	open Sue Hunley Cecilia Parajon
Dresses	Nell Elder Amy Golen
Garden Party Hosts	open
Organization + Invites	2 openings
Food+Volunteers	Alejandra Vallejo
Winter Concert	Suzanne Abu-Sharr Roberta Aronson Amy Golen
Awards Night	Francesca Slesinger 2 add'l openings
Historian	open
Music Trip	Amy Golen
Festival of the Arts	Anne Hollander
Judges' Hospitality	Bernice + Jay Kaufman
Music Website	Diana Deem
List-Serve	Carol Freedman



More on the Music Department Restructuring

<i>Ensemble</i>	<i>Composition and Eligibility</i>
Concert Band	Wind and percussion students, all grades. No audition required. This ensemble is not expected to participate in 2008-2009 annual music trip.
Concert Orchestra	String players only, all grades. No audition required.
Symphonic Band	Wind and percussion students in all grades (including rising 9 th -graders), by audition.
Symphonic Orchestra, String Orchestra and Wind Ensemble	Highly motivated wind, percussion and string students, all grades (including rising 9 th -grade strings), by audition. These are several ensembles all meeting during a single class period; rehearsals will alternate weekly. Strings students will participate in String Orchestra and Symphonic Orchestra. Wind and percussion students will participate in Wind Ensemble and Symphonic Orchestra or, if not selected for Symphonic Orchestra, in small chamber groups.
Developmental Jazz Ensemble	Players of standard jazz instruments (wind, percussion, double bass) in 10 th -12 th grades, selected by interview with Mr. Allen. Course must be taken in conjunction with concert or symphonic band.
Jazz Ensemble	Players of standard jazz instruments (wind, percussion, double bass) in 10 th -12 th grades, by audition.

FAQs

- Q.** Can I still participate in two music department courses or ensembles if I qualify?
A. Yes, of course!
- Q.** Can I schedule a semester-long or year-long "practice period" to learn the extra music?
A. Yes. Interested students should discuss this with Mr. Allen or Ms. Alvey.
- Q.** Most musical compositions are "graded" in difficulty from 1 to 6; what grade-level music will each Whitman ensemble perform?
A. That will vary according to the talent and dedication of each ensemble from year to year but, generally, the Jazz Ensemble, Symphonic Orchestra, String Orchestra and Wind Ensemble and its affiliated Wind/Percussion Chamber groups will perform grade-6 music for festivals and some "lighter" pieces at other times. The Symphonic Band will play grade-4-5 material, and the Concert Band, Concert Orchestra and Developmental Jazz Ensemble will likely work on grade 3-4 music.
- Q.** How will placement in these ensembles be determined for the 2008-09 school year?
A. This won't change. After the Festival of the Arts, Mr. Allen and Ms. Alvey teachers will audition instrumentalists from the Pyle 8th and Whitman 9th through 11th grades for placement next year, so students should keep up their playing and practicing.
- Q.** I like jazz. Must I participate in two groups if I play in a jazz ensemble?
A. Yes and no: Developmental Jazz students are required to participate in another group because that class focuses not on performance but on skill development. Jazz Ensemble members, however, are **welcome but no longer required** to join another Whitman ensemble.
- Q.** If I want to take two music classes, what other options are available other than instrumental performance groups?
A. Mr. Allen encourages instrumental music students to participate in as many music classes as are comfortable given the rest of their academic schedule. They might want to consider Mr. Wayne Chadwick's offerings in Music Theory and Composition, Piano, Guitar or Electronic Music. They can also audition for Whitman's outstanding choral ensembles.



RIGHT FOOT FIRST (THEN LEFT): FRESHMAN BAND CAMP

Incoming freshmen winds and percussionists should mark the dates of Wednesday and Friday, **August 20 and 22** for the famous, free Whitman Band Camp. Running 10 to 2, it conflicts with neither sports practices nor 9th-grade orientation. **Attendance is strongly encouraged**, as all Whitman bands perform at 2-3 football games. Band Camp is where they learn the necessary music and marching skills.